

Development Control Plan

The Kingston and Arthur's Vale Historic Area is a vibrant place where the Norfolk Island community lives, works and plays. The Development Control Plan (DCP) will assist in preserving the site's heritage while allowing the community to continue to use and celebrate the history and natural beauty of the site.

What is a DCP?

A Development Control Plan (DCP) is a detailed planning document that contains practical controls to guide the use of land and development of an area. The role of the DCP is to provide detailed design standards and guidelines for people preparing and assessing development applications.

What does the DCP do?

The Kingston and Arthur's Vale Historic Area DCP aims to help clarify:

- the development and uses that are allowed at the site
- what activities need a development application
- the information to be included in a development application
- the assessment and approvals process for development applications.

The DCP aims to provide a level of certainty to landowners, leaseholders and site managers on what they need to consider and do when they want to carry out development on land in the Kingston and Arthur's Vale Historic Area. The preparation of a DCP was a recommendation of the site's Heritage Management Plan.

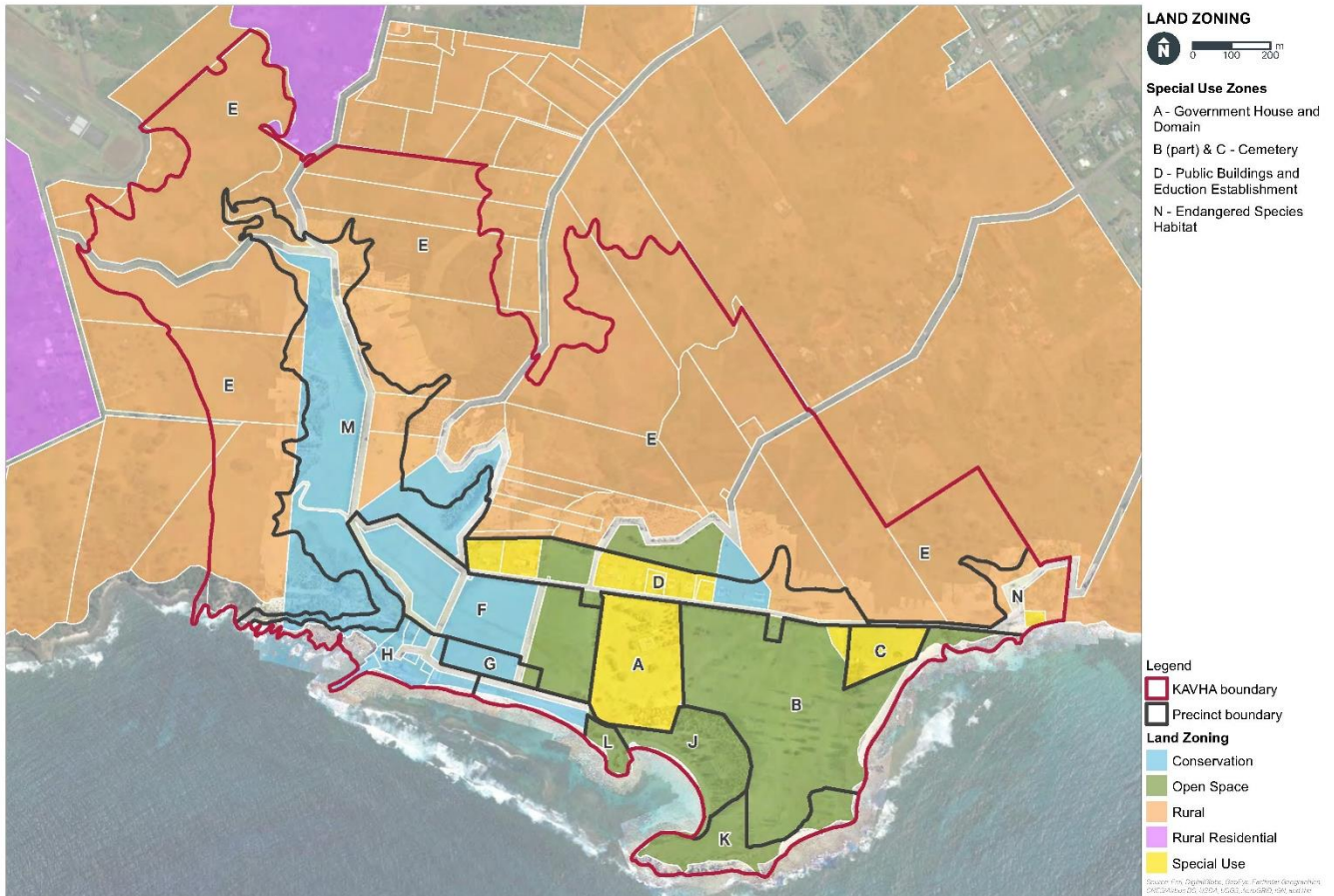
Where will the DCP apply?

The DCP applies to all land within the Kingston and Arthur's Vale Historic Area as defined by the World Heritage Listing boundary and shown in the map overleaf.

How is the DCP structured?

The site has been divided into precincts (A to N, excluding I) to allow a fine-grain approach to the management of the site and its key views, topography and archaeological sensitivity. Each precinct has tailored controls to manage the area accordingly. Section 4.0 of the DCP includes all the precincts and their detailed controls.





How does the DCP work?

When planning for development in the Kingston and Arthur's Vale Historic Area, first check the *Norfolk Island Plan 2002* for the relevant land use zone, what development is permissible and any other relevant controls.

The DCP can then be used to understand what controls are in place to guide permissible development within each zone. The flowchart at Figure 8 of the DCP will help determine the appropriate pathway to follow.

Where can I find out more?

The Development Application Checklist provides further information to assist in the preparation of development applications for activities within the Kingston and Arthur's Vale Historic Area.

For further information, please contact:
 Norfolk Island Regional Council Planning Office
planning@nirc.gov.au or +6723 23595

KAVHA Heritage Manager
martin.purslow@infrastructure.gov.au or +6723 23115

How does this plan relate to other plans?

